



**Pulsonix Design System**  
**Node Locked & Network Installation**  
**Start-up Notes**

## 2 Pulsonix Installation Guide

---

### Copyright Notice

Copyright © WestDev Ltd. 2001-2022

Pulsonix is a Trademark of WestDev Ltd. All rights reserved. E&OE

Copyright in the whole and every part of this software and manual belongs to WestDev Ltd. and may not be used, sold, transferred, copied or reproduced in whole or in part in any manner or in any media to any person, without the prior written consent of WestDev Ltd. If you use this manual you do so at your own risk and on the understanding that neither WestDev Ltd. nor associated companies shall be liable for any loss or damage of any kind.

WestDev Ltd. does not warrant that the software package will function properly in every hardware software environment.

Although WestDev Ltd. has tested the software and reviewed the documentation, WestDev Ltd. makes no warranty or representation, either express or implied, with respect to this software or documentation, their quality, performance, merchantability, or fitness for a particular purpose. This software and documentation are licensed 'as is', and you the licensee, by making use thereof, are assuming the entire risk as to their quality and performance.

In no event will WestDev Ltd. be liable for direct, indirect, special, incidental, or consequential damage arising out of the use or inability to use the software or documentation, even if advised of the possibility of such damages.

WestDev Ltd. reserves the right to alter, modify, correct and upgrade our software programs and publications without notice and without incurring liability.

Microsoft, Windows, Windows NT and Intellimouse are either registered trademarks or trademarks of Microsoft Corporation.

All other trademarks are acknowledged to their respective owners.

Pulsonix, a division of WestDev Ltd.

Printed in the UK.

Issue date: 07/04/22 Issue 8

### **Pulsonix**

20 Miller Court  
Severn Drive  
Tewkesbury  
Tewkesbury Business Park  
Glos, GL20 8DN  
United Kingdom

Phone +44 (0)1684 296 551  
Support +44 (0)1684 296 570  
Email [info@pulsonix.com](mailto:info@pulsonix.com)  
Support [support@pulsonix.com](mailto:support@pulsonix.com)  
Web [www.pulsonix.com](http://www.pulsonix.com)

# Contents

<b>CONTENTS .....</b>	<b>3</b>
<b>NODE LOCKED INSTALLATION .....</b>	<b>5</b>
Contents of the CD or Download Executable .....	5
Installing Pulsonix .....	5
Installation - New Users .....	5
To install the HASP USB key Driver .....	9
Installation - Existing Users .....	9
Licensing Pulsonix through the License Manager .....	10
Distributor Sales .....	10
Technical Support .....	11
<b>NETWORK LICENSE INSTALLATION .....</b>	<b>13</b>
Introduction .....	13
Node-locked licensing .....	13
What is network licensing? .....	13
How network licensing operates .....	13
Installation overview .....	14

## 4 Pulsonix Installation Guide

---

# Node Locked Installation

The information provided below is essential to get you started. Please read it carefully as it covers some important questions which get asked regularly. It also covers where you can obtain support from and the license agreement.

## Contents of the CD or Download Executable

The CD-ROM or download executable file contain the Pulsonix program installation, the HASP key driver, the On-line help, documentation and ancillary files for the program's use. The license file for the Pulsonix programs including all options are supplied separately by email or as a text file.

## Installing Pulsonix

### Floating Network License Users

If you have purchased a floating network license, you will need to use the installation guide in the next chapter headed *Floating Network Installation*.

### Before Starting

**Don't connect the USB key**, the Pulsonix product disk contains the USB key driver, which will be required.

### Storage of settings

The settings needed for licensing are stored in a configuration file called "License.ini". This file is created and maintained automatically by the installer and the applications, in a folder called "C:\PulsonixConfiguration". If you prefer this file to be written to a different hard drive, you can create a "PulsonixConfiguration" folder on any hard drive up to drive letter "H" before running the installer.

### Licensing Pulsonix

Before installation, you should copy your supplied Pulsonix license from an email to a suitable location on your hard drive. You can call it any name you like, license.lic, fred.lic 1234567.lic etc. but it must be .lic though and not contain illegal characters like '@#~

When requested for the license file, you should browse to the file saved previously.

## Installation - New Users

Copy the license supplied by email to a folder on your hard drive (c:\temp for example). Call it any name you like, license.lic, fred.lic 1234567.lic etc. it must have the .lic extension though and not contain illegal characters '@#~ etc.

### From CD

Now insert the CD-ROM into the CD drive and wait for a short time. The default setup of Windows includes an *autorun* facility that should detect the CD and start the **Intro** program on the CD.

If your system has the autorun facility disabled, or it simply hasn't worked, select **Run** from the **Taskbar Start** menu, and type **D:\setup.exe** (replacing the D: with the actual CD drive letter if yours is different), then **<Enter>**.

Double-click on the executable and the installation will start. Use the Installation Wizard to install Pulsonix.

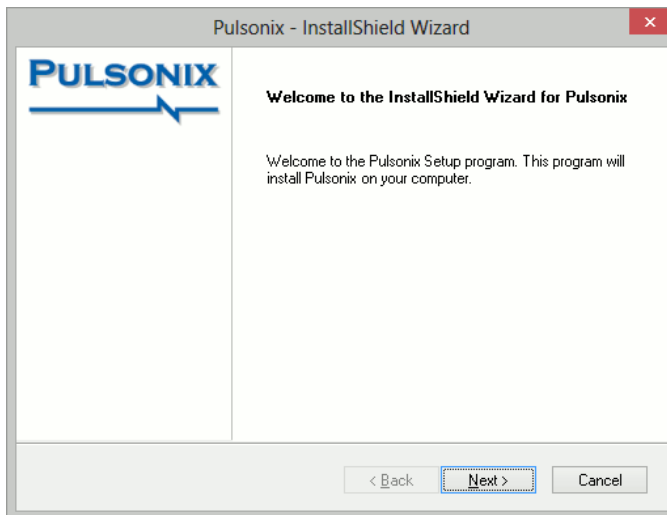
### From an electronic download

Using the instructions you have been provided with, download the Pulsonix installation set to your local hard drive or an accessible network location.

Double-click on the executable and the installation will start. Use the Installation Wizard to install Pulsonix.

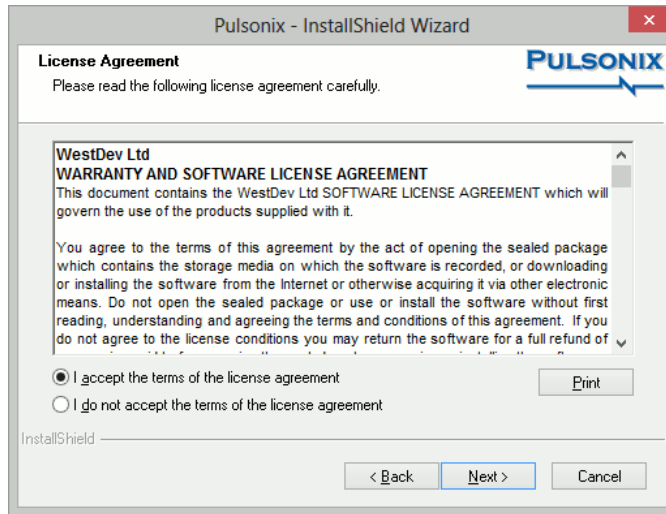
### Installation Wizard

From the **Setup** dialog, follow the instructions presented to you on the screen.

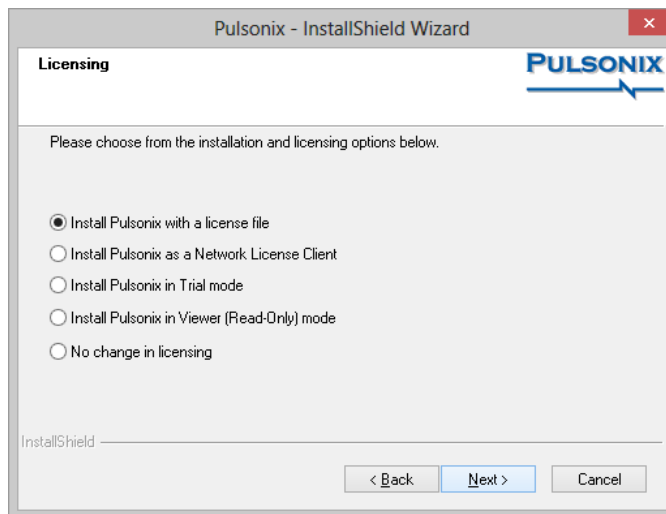


Press **Next>** to continue.

Select the **I Accept...** radio button to accept the terms and conditions of the agreement displayed. Press **Next>** to continue.

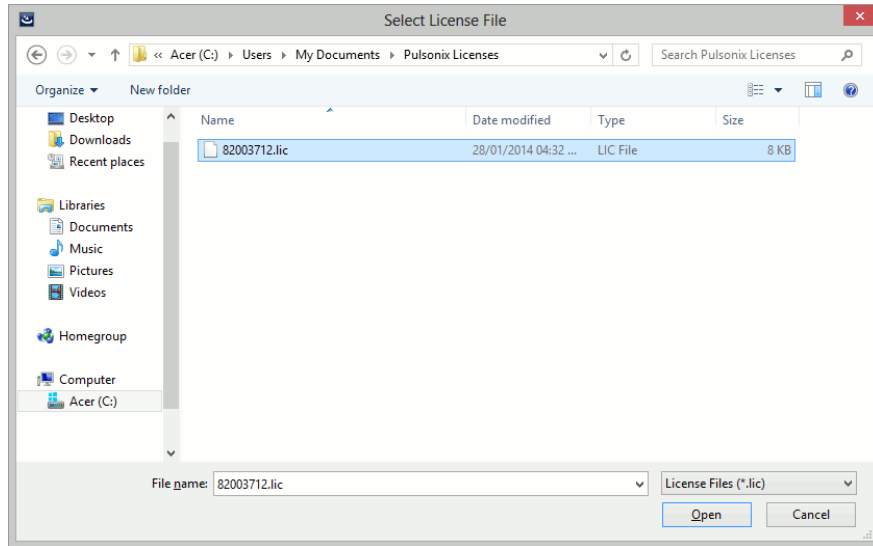


You will be requested to select a **license** type:



You can opt to run the program in **Trial mode** and then select a license after installation or by selecting the first option, **Install Pulsonix with a license file**, can browse to the location where it is saved and select the file. Press the **Open** button once the file has been selected.

The license file will be supplied to you by email generally. Copy the file supplied onto your local hard drive. This is the location you will browse to.



You will need to install the HASP USB driver if you are using the HASP USB key for Pulsonix security. Follow the additional instructions below if you require the driver to be installed.

If using a MAC address for the security lock, you will not need to install this driver.

Follow the instructions and click **Finish** to complete the installation.

### To install the license file after installation of Pulsonix

#### ► To use a license file after installation

1. Do not attach the USB key!
2. Install Pulsonix from the CD or demo download on the Pulsonix web site. The product is the same whether you run in demo mode or full product, it's just that the save mode is enabled or disabled.
3. Once Pulsonix is running successfully in demo mode, close it.
4. Copy the license file supplied in the email to a location on your hard drive (anywhere).
5. Call it any name you like, license.lic, fred.lic 1234567.lic etc. it must be .lic though and not contain illegal characters '@#~' etc.
6. From the **Start** menu on the **Task** bar, go to the **Pulsonix** program folder and run **License Manager**.
7. Select the **Browse License File** button and locate the license file, click the **OK** button.
8. If you have installed Pulsonix in demo mode, you will now be prompted to load the Aladdin HASP key driver. You must install this if you wish to use the USB key supplied. If using a MAC address, you will not need to install this.
9. The **Licenses** list will show you the license has loaded correctly.
10. Close the License Manager.
11. Attach the USB key if you have been supplied one.



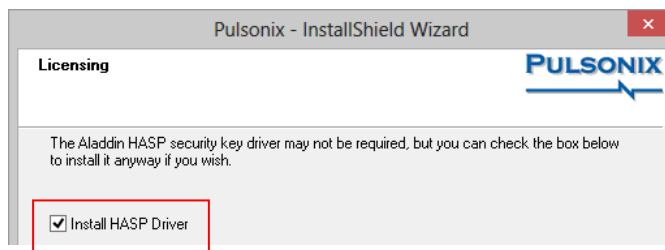
12. Run Pulsonix and it will operate with the **Save** and **Save As** modes enabled.

## To install the HASP USB key Driver

Pulsonix uses a USB key or MAC address based license to protect the product. To use the key with Windows it requires its own device driver to be installed. This will be installed as part of the installation procedure during Setup if it doesn't already exist on your computer.

Install Pulsonix **before** attaching the key. **Don't connect USB key, the Pulsonix product disk contains the USB key driver, which will be required.**

During installation, you are requested to install the USB Driver by selecting the **Install USB Driver** check box on its own page. The driver is supplied on the CD. This is a special driver and must be used for correct operation of Pulsonix. The driver can also be installed separately using its own installation program.



Once the installation is complete, if you connect the USB key, the Windows Plug & Play option will automatically detect the key and request the driver. Select the **Aladdin HASP** driver installed. The key will now be ready for use.

## Troubleshooting the USB installation

If you experience problems installing the USB key drive, either contact your local technical support center, or visit the Pulsonix web site [www.pulsonix.com](http://www.pulsonix.com) and view the Tools page which has additional information available.

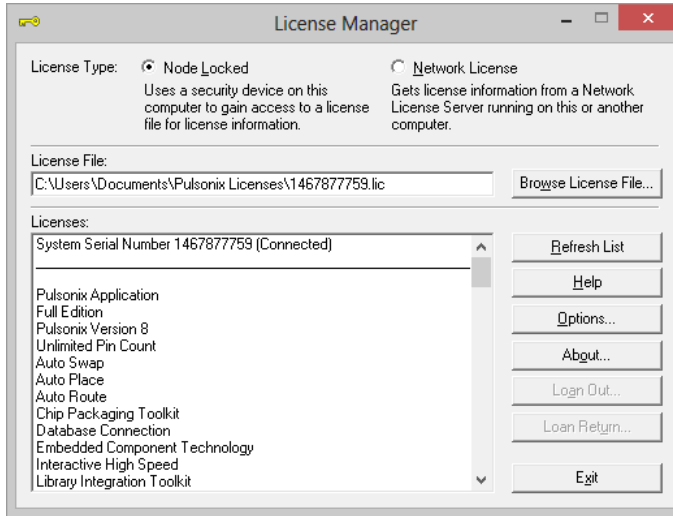
## Installation - Existing Users

The installation is the same for both new and existing users except for a few minor points:

- The new installation can be made over the top of any existing Pulsonix product or revision.
- Unless otherwise instructed to do so, or unless you receive a new license file, you will use your existing license. During installation you can select not to install any more licenses. If a new license file has been supplied, use this during installation.
- Ensure that you de-select the **MasterLibrary** and **UserLibrary** switches during setup if you do not wish to overwrite your existing libraries. It is recommended that you backup all libraries before you attempt the installation.
- You may also need to de-select check boxes for other installed items such as Technology files, Format files, Colour files etc. otherwise these will be overwritten.

### Licensing Pulsonix through the License Manager

In the event that the license has not been recognised by the program or that there is a problem with the license file, you will need to run the **Pulsonix License Manager** program. This program can be run by clicking the **Start** button from the **Taskbar** and clicking **Programs**. Then click **Pulsonix**, click **License Manager**.



Using the **Browse License File** button, use the **Open** dialog to select the license file to use and click **OK** to use it. The contents will show a list of internal Pulsonix packages authorised for use.

A successful authorisation will display a completion message.

### Floating Network Licensing

If you have purchased a floating network license, you will need to use the installation guide in the next chapter headed *Floating Network Installation*.

### Distributor Sales

If you have purchased this software package through one of our distributors or resellers, you must register the product with our sales office in order to qualify for free technical support from our support desk for the first 12 months. The registration is only used by Pulsonix for qualifying eligibility of technical support and for keeping you informed and up-to-date about our products. Your details are not passed onto any other 3<sup>rd</sup> party or used for any other purposes. Support is not provided in any circumstances where the product has not been registered if bought through one of these channels.

---

*Note: Additional extended support schemes are available outside the initial warranty period. Please contact your local sales office for further information.*

---

## Technical Support

### Technical Support Maintenance

A technical support maintenance contract entitles you to one full year of free support by phone, fax or email. You will also be entitled to download updates from our web site, and will be provided with any major updates within this extended period.

Without training, technical support can only be provided on problems relating to the software or where an option's use is not clear in the Users Guide. Training cannot be given over the phone for the product's use.

### Pulsonix Web-site

The Pulsonix web site will contains current information about the products and contains technical information for existing users. This includes items such as updated default files and libraries, plus tips and techniques for using the product. This service is available on [www.pulsonix.com](http://www.pulsonix.com)

### Updates

Free service patches are available for maintenance paying customers through our web site [www.pulsonix.com](http://www.pulsonix.com). We do not provide service patches on CD-ROM free of charge but they are available if requested for a small media charge. A login and password are required to access the update service on our web site. This is limited to the duration of a valid maintenance contract. Once outside of the contract without renewing, this service is automatically suspended for your access.

### On-site Support

On-site support is not provided as part of any technical support package under any circumstances. If you require this service, please contact us for more information. Our technical support people have remote access utilities where they can access remote computers for diagnostic purposes.

### Supported Versions of Software

Support can only be provided on the current major release, and where problems are to be verified, the latest patch version on our web site. If we need to fix designs for any reason, the design can only be fixed in the latest version of the program. For an up-to-date list of supported operating systems, please visit our web site [www.pulsonix.com/support.asp](http://www.pulsonix.com/support.asp)

### Training

Training courses can be arranged both on and off customer site. Standard courses are available or can be tailored for individual customers and scheduled to suite your requirements. All courses are lead by experienced instructors from our staff. Please contact our sales office for information and availability.

### Technical Support For International Users

Users outside the UK should contact their local distributor for technical support, or contact our international sales office for more information.

### Distributor Sales

If you have purchased Pulsonix through one of our distributors, you must obtain support through that office.

### Contact Details

Email Support	<a href="mailto:support@pulsonix.com">support@pulsonix.com</a>
Web site	<a href="http://www.pulsonix.com">www.pulsonix.com</a>
Support Phone	+44 (0) 1684 296 570
Support Fax	+44 (0) 1684 296 515

# Network License Installation

## Introduction

Pulsonix support two types of licensing; node-locked and network (or ‘floating’).

### Node-locked licensing

Node-locked is a single installation of Pulsonix which has the product and security device (a key or Network Address) on the same PC. This system can be ‘network aware’ but will not look at any other ‘node’ or server for its security.

### What is network licensing?

Network licensing provides the ability to have an installation of Pulsonix on one PC, and its security on another, which removes the need for a security device on each machine on which Pulsonix is to be used.

This is sometimes called ‘floating’ licensing, and because the licensing is ‘floating’, this means that as long as a particular PC has an installation of Pulsonix, and it points at the correct server PC for its licensing, then it can book out the necessary licenses for use. This can happen on any PC on a given network provided enough licenses are available from the server. The number of any particular license available is predefined based on the number purchased.

Network licensing should not be confused with the use of a network card address as the security device.

### How network licensing operates

The network licensing is managed centrally by a network license ‘server’ that controls access to the licensed options, protected by the security device. This mechanism allows licenses to be ‘floated’ to any nominated machine within a local network. The scheme works on a book out / book in system for each available product license.

The server application can also be configured to allow particular combinations of licenses, users and/or machines to be granted or denied access to particular licenses. For example, user *Bert* might be able to use a Pulsonix Schematics license but not a PCB one, while user *Fred* can use Schematics, PCB and the Autorouter. This example also applies for machines, so that a user can log in as his name on any machine but will still only have the products available to him, ones that have been allocated to him through the administration options in the server.

The floating license scheme uses a special set of licenses; you can’t ‘float’ normal licenses. The Network License Server will not run unless the license file contains the right type of licenses.

## 14 Network License Installation

---

### Installation overview

Below is an overview of the order in which to install the various facets required to run network licensing:

- Use the Network License Server (“NLS”) Setup program to install the Network License Server.
- Start the Network License Server.
- On each of the machines on which Pulsonix itself is to be used, use the Pulsonix Setup program to install Pulsonix as a Network License Client.

Full details about installing, configuring and managing Network licensing are contained in the **Pulsonix Network Licensing User’s Guide**. This is available on the product CD and is installed into the Pulsonix folder under \Documents. It is also available on our web site

[www.pulsonix.com](http://www.pulsonix.com).